



Graduate School of Education Tohoku University

Webinar Series 2020 Transforming Education in the Era of New Normal Experiences and Prospects in Asia-Pacific

Webinar 2:

No One Left Behind: Keeping Inclusive and Quality Education in Global Pandemic

Moderator:

Mr. Jing Liu, Associate Professor, Graduate School of Education, Tohoku University

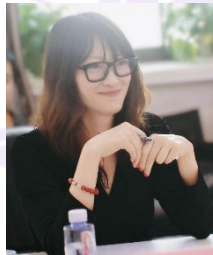
Saturday, 27 June, 2020, 14:00-16:00
Japan Standard Time (JST), UTC +9

This Webinar is to invite scholars in Asia-Pacific to exchange policies and practices in guaranteeing inclusive and quality education for all in Asia-Pacific region during and after COVID-19 pandemic. Also, it is to invite policy maker and school teachers from different social contexts to share their experiences and challenges in responding to the impact of COVID-19 on school education.



**Ms. Maki Katsuno-
Hayashikawa**

Chief, Inclusive Quality
Education (IQE) Section,
UNESCO Asia-Pacific
Regional Bureau for Education
(UNESCO Bangkok)



Ms. Wei Zhang

Professor
Executive Director, Centre for
International Research in
Supplementary Tutoring,
Institute of Curriculum and
Instruction, East China Normal
University



Ms. Kaori Suetomi

Professor
Department of Education
College of Humanities and Sciences
Nihon University



Mr. Freddie V. Avendano

Assistant Schools Division
Superintendent, Department of
Education, Quezon City, The
Philippines



Ms. Zhen Chang

English Teacher
Beijing No.12 Middle School
China



Mr. Keigo Anezaki

English Teacher
Tokiwagi Gakuen, Sendai,
Miyagi Prefecture
Japan

Registration

- ① Scan QR-code
- ② Fill out Registration Form



(First-come, first-served basis with limited quota)

For inquires: Jing Liu at jing.liu.e8@tohoku.ac.jp